



Figure similar

MLFB-Ordering data

6SL3210-5BB13-7UV1

Client order no. :

Order no. :

Offer no. :

Remarks :

Item no. :

Consignment no. :

Project :

Rated data		General tech. specifications	
Input		Power factor λ	0.72
Number of phases	1 AC	Offset factor $\cos \phi$	0.95
Line voltage	200 ... 240 V -15 % +10 %	Efficiency η	0.98
Line frequency	47 ... 63 Hz	Filter class (integrated)	Unfiltered
Output		Ambient conditions	
Number of phases	3 AC	Cooling	convection cooling
Rated voltage	230 V	Installation altitude	1000 m (3281 ft)
Rated power (HO)	0.37 kW / 0.50 hp	Ambient temperature	
Rated power (LO)	0.37 kW / 0.37 hp	Operation	-10 ... 60 °C (14 ... 140 °F)
Rated current (HO)	2.30 A	Storage	-40 ... 70 °C (-40 ... 158 °F)
Rated current (LO)	2.30 A	Relative humidity	
Pulse frequency	8.00 kHz	Max. operation	95 %
Output frequency	0 ... 550 Hz	Communication	
		Communication	USS, Modbus RTU
		Standards	
		Compliance with standards	CE, cULus, C-Tick (RCM), KC
		CE marking	EN 61800-5-1 / EN 60204-1 and EN 61800-3

Overload capability

Low Overload (LO)

110 % rated output current for 60 s, cycle time 300 s

High Overload (HO)

150 % rated output current for 60 s, cycle time 300 s



Figure similar

MLFB-Ordering data

6SL3210-5BB13-7UV1

Mechanical data

Mounting position	Wall mounting / side-by-side mounting
Degree of protection	IP20 / UL open type
Size	FSAA
Net weight	0.70 kg (1.54 lb)
Width	68.0 mm (2.68 in)
Height	142.0 mm (5.59 in)
Depth	107.8 mm (4.24 in)

Inputs / outputs

Standard digital inputs

Number	4
--------	---

Digital outputs

Number as relay changeover contact	1
Number as transistor	1

Analog inputs

Number	2 (Can be used as additional digital input)
--------	---

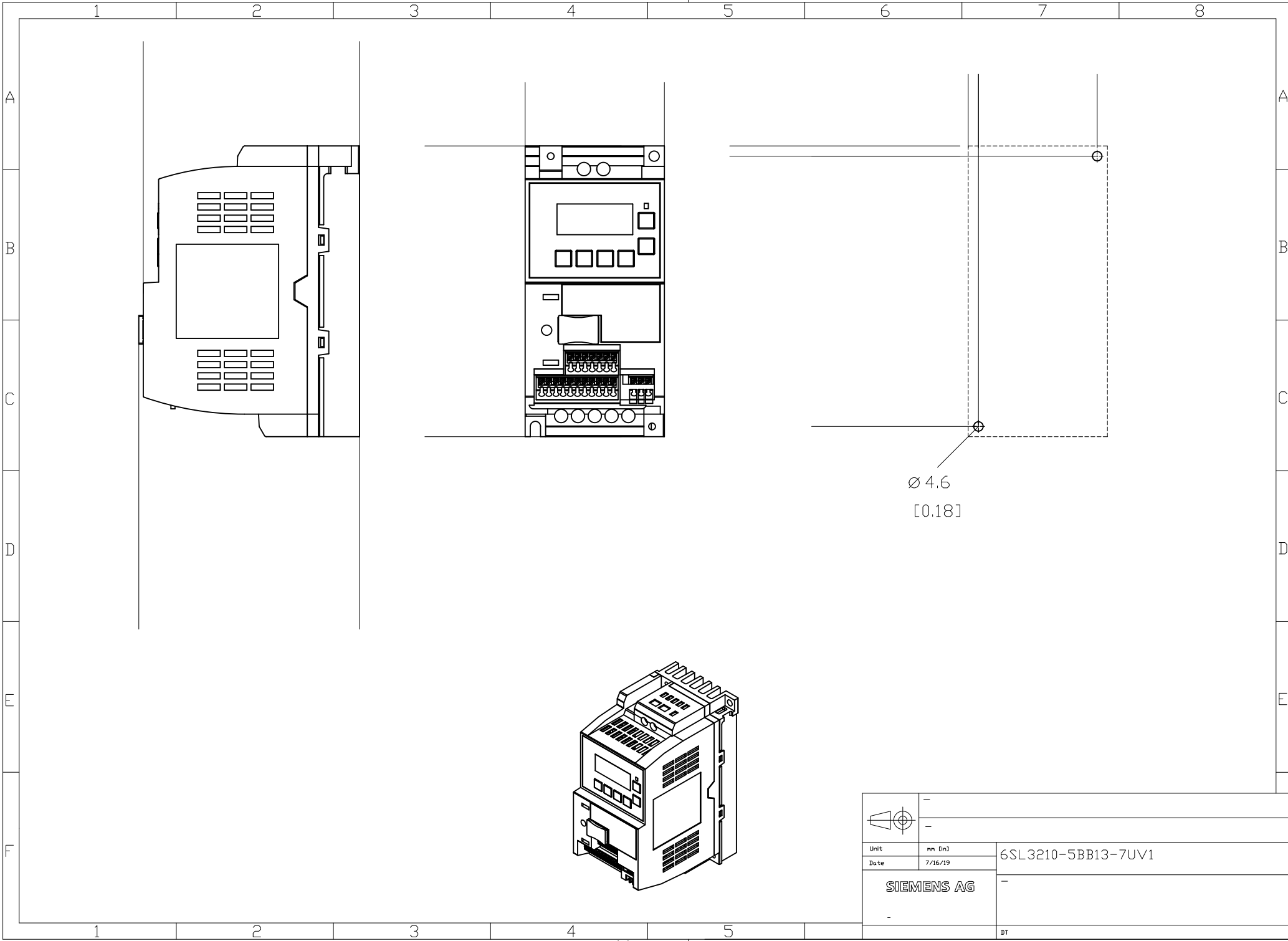
Analog outputs

Number	1
--------	---

Connections

Max. motor cable length

Shielded	25 m (82 ft)
Unshielded	50 m (164 ft)



		-
Unit	mm (in)	6SL3210-5BB13-7UV1
Date	7/16/19	
SIEMENS AG		-
		DT