

# Data sheet for three-phase Squirrel-Cage-Motors SIMOTICS



Motor type : 1CV3130D

SIMOTICS SD - 132 S - IM B3 - 8p

Client order no.	Item-No.	Offer no.
Order no.	Consignment no.	Project
Remarks		

## Electrical data

## Safe Area

U [V]	$\Delta / Y$	f [Hz]	P [kW]	P [hp]	I [A]	n [1/min]	M [Nm]	$\eta$ <sup>3)</sup>			$\cos\phi$ <sup>3)</sup>			$I_A/I_N$ $I_f/I_N$	$M_A/M_N$ $T_f/T_N$	$M_K/M_N$ $T_B/T_N$	IE-CL
								4/4	3/4	2/4	4/4	3/4	2/4				
<b>DOL duty (S1) - 155(F) to 130(B)</b>																	
230	$\Delta$	50	2.20	-/-	9.50	725	29.0	81.9	82.5	80.9	0.71	0.63	0.50	5.0	1.9	2.5	IE3
400	Y	50	2.20	-/-	5.30	725	29.0	81.9	82.5	80.9	0.71	0.63	0.50	5.0	1.9	2.5	IE3
IM B3 / IM 1001			FS 132 S		IP55		UKCA	IEC/EN 60034		IEC, DIN, ISO, VDE, EN							
Environmental conditions : -20 °C - +40 °C / 1000 m										Locked rotor time (hot / cold) : 26.7 s   35.2 s							

## Mechanical data

Sound level (SPL / SWL) at 50Hz 60Hz	64 / 77 dB(A) <sup>2) 3)</sup>	67 / 80 dB(A) <sup>2) 3)</sup>	Vibration severity grade	A
Moment of inertia	0.0460 kg m <sup>2</sup>		Thermal class	F
Bearing DE   NDE	6308 2Z C3	6308 2Z C3	Duty type	S1
<b>bearing lifetime</b>			Direction of rotation	bidirectional
$L_{10mh}$ , $F_{Rad}$ min 50 60Hz <sup>1)</sup> for coupling operation	40000 h	32000 h	Frame material	cast iron
Regreasing device	No		Net weight of the motor (IM B3)	60 kg
Grease nipple	-/-		Coating (paint finish)	Special paint finish C3
Type of bearing	Preloaded bearing DE		Color, paint shade	RAL7030
Condensate drainage holes	Yes (standard)		Motor protection	(B) 3 PTC thermistors - for tripping (standard) (2 terminals)
External earthing terminal	No		Method of cooling	IC411 - self ventilated, surface cooled

## Terminal box

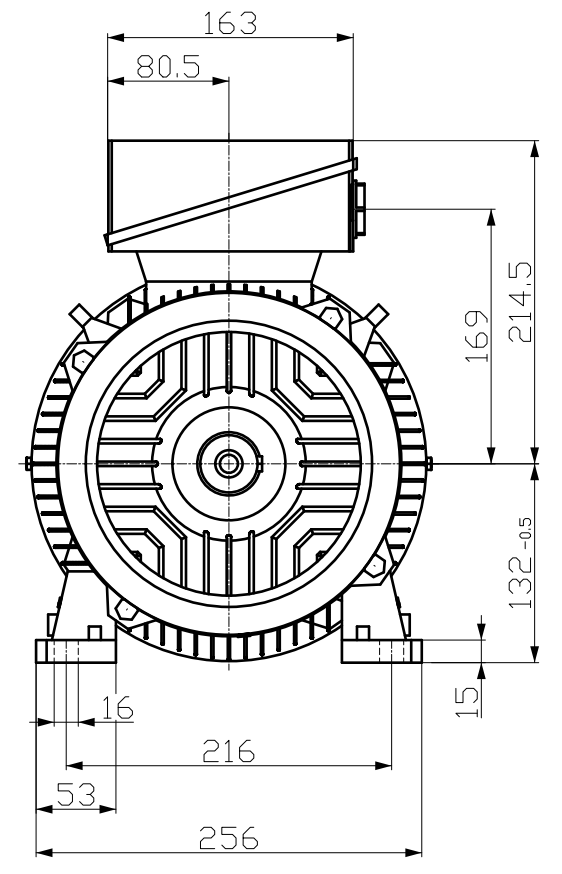
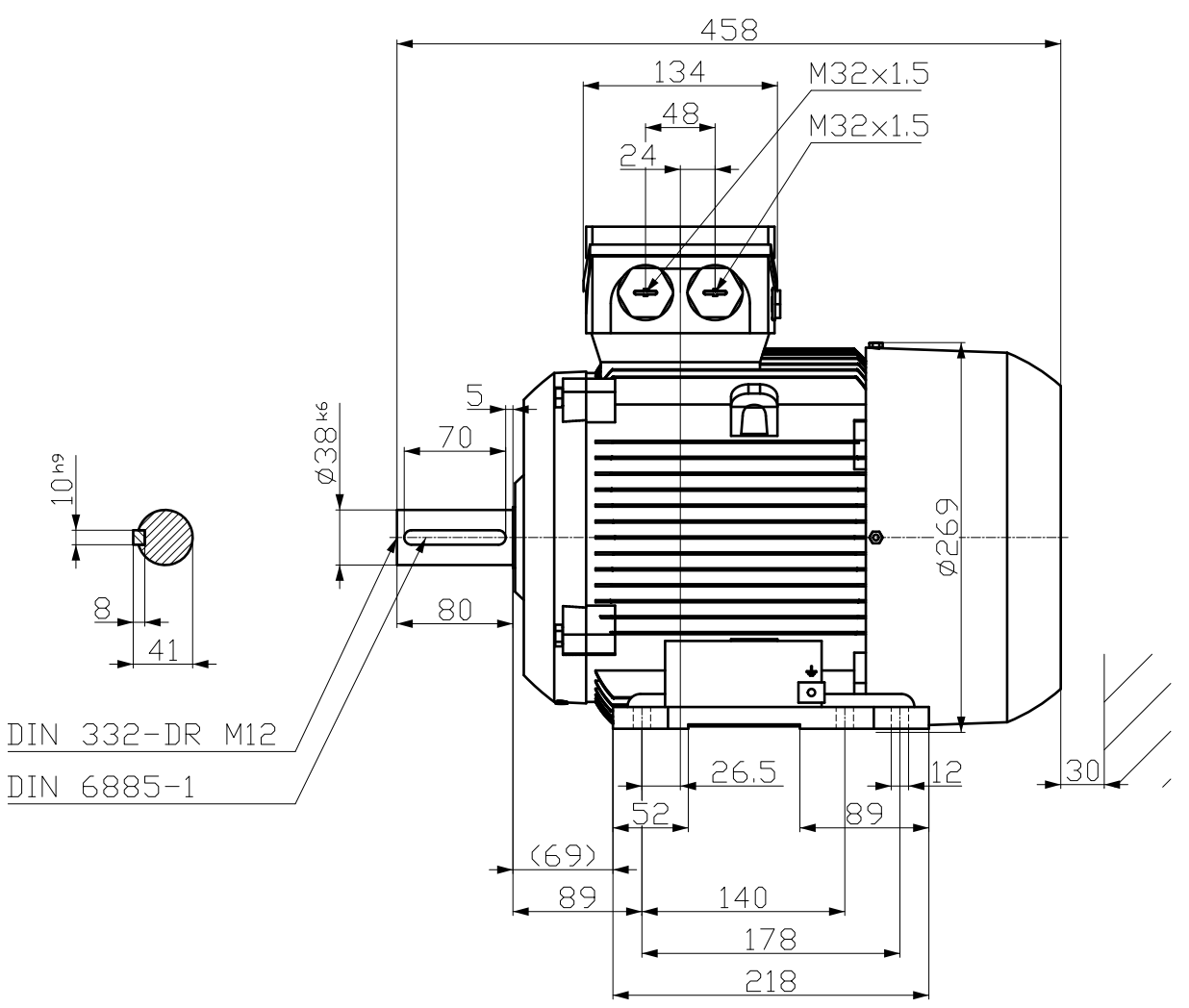
Terminal box position	top	Max. cross-sectional area	6 mm <sup>2</sup>
Material of terminal box	cast iron	Cable diameter from ... to ...	11 mm - 21 mm
Type of terminal box	TB1 H01	Cable entry	2xM32x1,5-1xM16x1,5
Contact screw thread	M4	Cable gland	3 plugs

### Notes:

$I_A/I_N$  = locked rotor current / current nominal  
 $M_A/M_N$  = locked rotor torque / torque nominal  
 $M_K/M_N$  = break down torque / nominal torque  
 1) L10mh according to DIN ISO 281 10/2010  
 2) at rated power / at full load  
 3) Value is valid only for DOL operation with motor design IC411

responsible dep. DI MC LVM	technical reference	created by DT Configurator	approved by	<i>Technical data are subject to change! There may be discrepancies between calculated and rating plate values.</i>	<a href="#">Link documents</a>
	document type datasheet	document status released			
	title 1LE1603-1CD02-2AB4	document number			
© Siemens AG 2023	rev. 929	creation date 2023-01-17	language en		

刀痕等  
用转换为  
用文全图  
积  
V:\a\p\2018\201807\20180701\20180701\_01.dwg  
20180701  
20180701  
20180701



Tolerance	Surface	Material	Weight	Scale
F50 F10 F00 C300	Author	ÖS	Ä	1:1
E	Creator	ÖVS	Ä	
	Approval	T	Ä	
	Department			
	Change Order	MLFB		
	Doc. State	F50 F10	Doc Type	
SIEMENS	Revision	Index	Paper Size	A4
© Siemens AG 2018	Project No	E	1st Language	Ä
			2nd Language	Ä
			Sheet	F of F