

Data sheet for three-phase Squirrel-Cage-Motors SIMOTICS



Motor type : 1AV3106B

SIMOTICS GP - 100 L - IM B35 - 4p

Client order no.	Item-No.	Offer no.
Order no.	Consignment no.	Project

Remarks

Electrical data

Safe Area

U [V]	Δ / Y	f [Hz]	P [kW]	P [hp]	I [A]	n [1/min]	M [Nm]	η ³⁾			$\cos\phi$ ³⁾			I_A/I_N I_i/I_N	M_A/M_N T_i/T_N	M_K/M_N T_B/T_N	IE-CL
								4/4	3/4	2/4	4/4	3/4	2/4				
230	Δ	50	4.00	-/-	14.00	1455	26.5	88.6	89.4	88.8	0.81	0.75	0.62	7.5	2.9	3.7	IE3
400	Y	50	4.00	-/-	8.00	1455	26.5	88.6	89.4	88.8	0.81	0.75	0.62	7.5	2.9	3.7	IE3
460	Y	60	4.55	-/-	7.90	1755	25.0	89.5	90.0	89.4	0.81	0.75	0.64	8.1	3.0	3.9	IE3
460	Y	60	3.70	-/-	6.70	1768	20.0	89.5	89.5	87.7	0.77	0.70	0.58	9.5	3.8	4.8	IE3

IM B35 / IM 2001	FS 100 L	IP55	IEC/EN 60034	IEC, DIN, ISO, VDE, EN
------------------	----------	------	--------------	------------------------

Environmental conditions : -20 °C - +40 °C / 1000 m

Locked rotor time (hot / cold) : 12.8 s | 19.2 s

Mechanical data

Sound level (SPL / SWL) at 50Hz 60Hz	67 / 75 dB(A) ²⁾	71 / 79 dB(A) ²⁾	Vibration severity grade	A
Moment of inertia	0.0149 kg m ²		Insulation	155(F) to 130(B)
Bearing DE NDE	6206 2Z C3	6206 2Z C3	Duty type	S1
bearing lifetime			Direction of rotation	bidirectional
L _{10mh} , F _{Rad} min 50 60Hz ¹⁾ for coupling operation	40000 h	32000 h	Frame material	aluminum
Lubricants	Unirex N3		Net weight of the motor (IM B3)	42 kg
Regreasing device	No		Coating (paint finish)	Standard paint finish C2
Grease nipple	-/-		Color, paint shade	RAL7030
Type of bearing	Preloaded bearing DE		Motor protection	(A) without (Standard)
Condensate drainage holes	No		Method of cooling	IC411 - self ventilated, surface cooled
External earthing terminal	No			


Terminal box

Terminal box position	top	Max. cross-sectional area	4 mm ²
Material of terminal box	Aluminium	Cable diameter from ... to ...	11 mm - 21 mm
Type of terminal box	TB1 F00	Cable entry	2xM32x1,5
Contact screw thread	M4	Cable gland	2 plugs

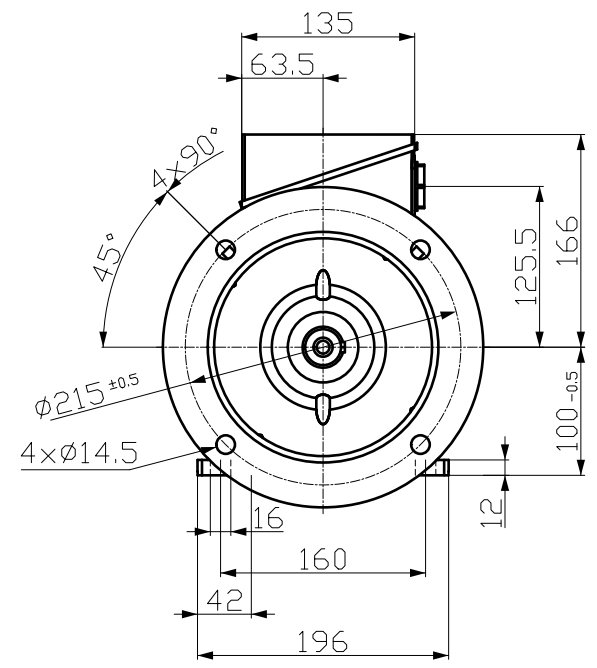
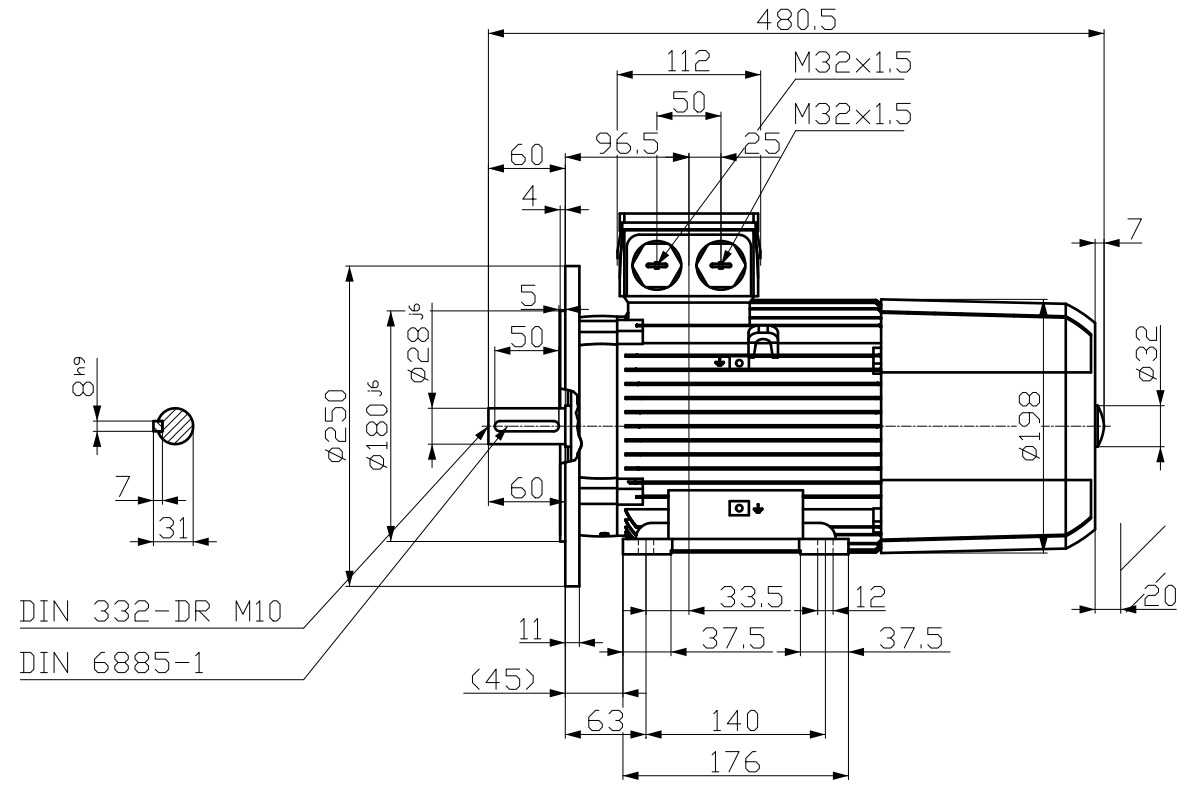
Notes:

I_A/I_N = locked rotor current / current nominal
 M_A/M_N = locked rotor torque / torque nominal
 M_K/M_N = break down torque / nominal torque
 1) L10mh according to DIN ISO 281 10/2010
 2) at rated power / at full load
 3) Value is valid only for DOL operation with motor design IC411

responsible dep. DI MC LVM	technical reference	created by DT Configurator	approved by	<i>Technical data are subject to change! There may be discrepancies between calculated and rating plate values.</i>
-------------------------------	---------------------	-------------------------------	-------------	---

	document type datasheet	document status released	customer	
	title 1LE1003-1AB62-2JA4	document number	rev. 01	creation date 2021-11-02 09:33
© Siemens AG 2021				Page 1/1

刀线管
 用文全
 图
 积
 01
 02
 03
 04
 05
 06
 07
 08
 09
 10
 11
 12
 13
 14
 15
 16
 17
 18
 19
 20
 21
 22
 23
 24
 25
 26
 27
 28
 29
 30
 31
 32
 33
 34
 35
 36
 37
 38
 39
 40
 41
 42
 43
 44
 45
 46
 47
 48
 49
 50
 51
 52
 53
 54
 55
 56
 57
 58
 59
 60
 61
 62
 63
 64
 65
 66
 67
 68
 69
 70
 71
 72
 73
 74
 75
 76
 77
 78
 79
 80
 81
 82
 83
 84
 85
 86
 87
 88
 89
 90
 91
 92
 93
 94
 95
 96
 97
 98
 99
 100



Tolerance	Surface	Material	Weight	Scale
FSÖFEHFCI GCR	Author	ÖS	É	{ { }
É	Creator	ÖVS	Öä ^} •ä } a/ä ä *	
	Approval	T ä : ^ä@ } *		
	Department			
	Change Order	MLFB	Doc Type	/
	Doc. State	FFBDF	Item No	Paper Size CH
	Revision	Index RS	Doc No	1st Language ^}
	Project No	É	Ref No	2nd Language ä^
© Siemens AG 2018				Sheet F of F

SIEMENS